



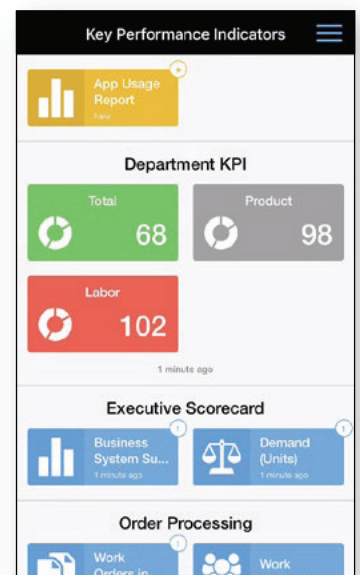
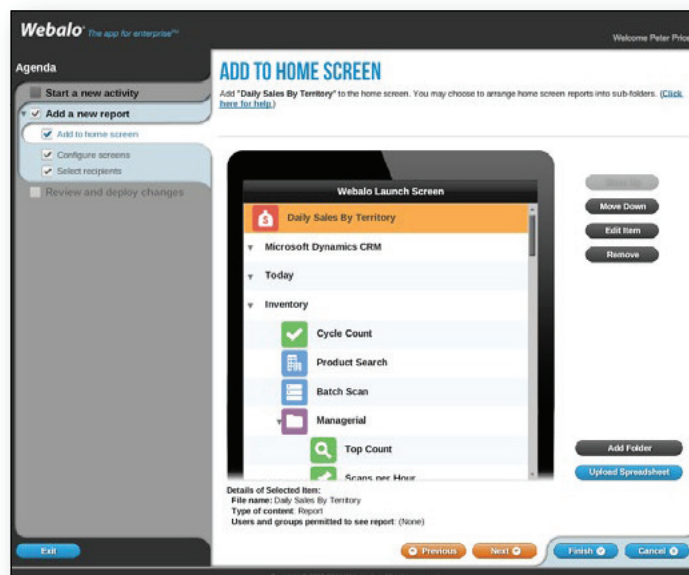
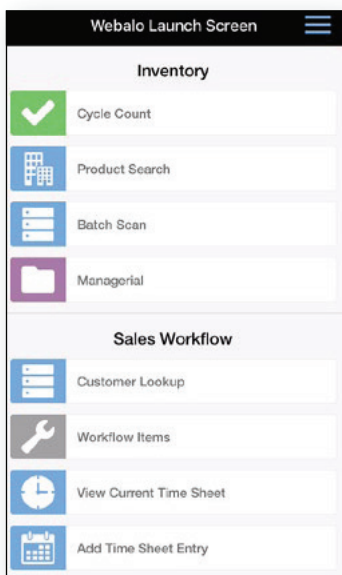
Webalo is an enterprise-grade mobile and desktop rapid application development platform. Today, enterprise apps need to be task-specific and data has to come from multiple back-end systems with demanding integration, security, authentication, availability and scalability requirements. Webalo has standardized and commoditized all of these complex requirements into a single set of reusable components that makes data available, informative and actionable. It makes businesses more productive by helping employees to make better, more informed, decisions.

### Webalo Platform

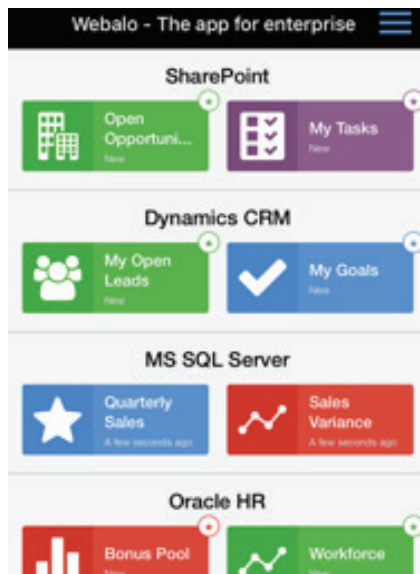
Webalo enables IT organizations, business units, and departments to generate their own apps automatically, seamlessly connecting and inter-operating with enterprise applications and data. It provides out-of-the-box integration with Enterprise Mobility Management Platforms such as those from BlackBerry, Citrix, IBM, & VMWare. Webalo makes it easy for IT to ensure data security, provide protection against unauthorized access, and deploy and manage Webalo-generated mobile apps with complete confidence.

Webalo for Mobile automatically generates native apps for Android, Apple, BlackBerry, & Windows mobile devices. Webalo for Desktop extends Webalo apps to Chrome, Firefox, IE, & Safari desktop browsers so that licensed users can seamlessly switch between their mobile devices and their desktops, and app developers can deploy to mobile and desktop utilizing the same simple, rapid, low-cost Webalo app development process.

The Webalo Administrative Website is available as an AWS multi-tenant service or as a virtual appliance that can be downloaded to run behind the firewall. Webalo integrates with databases and enterprise applications from vendors such as IBM, Microsoft, Oracle, and SAP, as well with custom applications.



### Features



### Description of features

- Simple, rapid, low-cost app development
- Automatic, cross-platform, app generation
- Native mobile client with support for Android, Apple, BlackBerry, & Windows devices
- Desktop client with support for Chrome, Firefox, IE, & Safari browsers
- Out-of-the-box integration with Enterprise Mobility Management Platforms such as those from BlackBerry, Citrix, IBM, MobileIron & VMWare
- Choice of deployment options:
  - Multi-tenant cloud – AWS
  - Virtual appliance behind-the-firewall – VMware, Hyper-V, and Xen
- Enterprise-grade data integration to multiple data sources from vendors such as IBM, Microsoft, Oracle, and SAP, and custom-built applications
- Advanced security and authentication features

### Why Webalo?

#### Features of the joint solution

Cross-platform, application generation.

On-premise or in the cloud.

Connect to multiple data sources.

Enterprise grade platform

#### Related Benefits

Rapidly deploy critical enterprise applications.

Your choice of deployment model.

Mobilize all of your key backend data sources.

Secure, scalable 24/7 operation

**To learn more about Webalo, visit [www.webalo.com](http://www.webalo.com)**

### About Webalo



Webalo is an enterprise-grade mobile and desktop rapid application development platform. It enables IT organizations, business units, and departments to generate their own apps automatically, seamlessly, and securely, connecting and inter-operating with enterprise applications and making data available, relevant and actionable. Webalo makes businesses more productive by helping employees to make better, more informed, decisions.